

M.V. SOLITA'S CRUISING NOTES



BOAT BUILDING AND REPAIR YARDS
PT CARMEN, CEBU, PHILIPPINES
DECEMBER 2012



Pt Carmen is situated on the eastern side of Cebu Island, in the centre of the Visayan Island group. It is approximately 30 miles north of Cebu City, and the National Highway connects it to there by road.

The boat yards of Pt Carmen have existed for many years but have become busier in recent times as western yachtees have discovered them. While their facilities may not be to Australian or American standards, they do offer a very good and definitely affordable service. The tradesmen generally deliver excellent timber, fiberglass and paint work, and most boat parts, supplies and additional services like upholstery and stainless steel work are available here.

We were referred here by several other yachtees who had used the boatyards and spoke favourably about the work they had had done here. On the strength of these comments, we decided to travel to Pt Carmen to get some timberwork and fibre glass work done. As is usual with refits, our list grew longer as we progressed, and we spent a total of 17 weeks there, but it was a very positive experience and we would recommend that cruising folk in South East Asia consider Pt Carmen for their next refit.

Thanks to Rene Misa at Pepe's yard for assistance with sourcing many of the services and suppliers.

Sue and John Woods

MV Solita

(email: woodsonsolita@gmail.com)

CONTENTS:

BOAT REPAIR YARDS AT PORT CARMEN	4
WEATHER	6
APPROACHES TO PT CARMEN	7
HAUL OUT FACILITIES/SERVICES	9
ATTRACTIONS AROUND CARMEN	10
SIDE TRIPS FROM CARMEN	11
SERVICES & SUPPLIES IN PORT CARMEN	12

BOAT YARDS IN PT CARMEN, CEBU

There are two local boat yards in Port Carmen that foreign yachts have been frequenting in recent years. They are both in the southern arm of Pt Carmen Bay. There is also an aluminum catamaran building yard on the northern side of Pt Carmen Bay.

Zeke's Boat Yard, also known as Pinoy Boat Services, is located towards the end of the southern arm of Pt Carmen, past the old concrete wharves on the west side of the inlet. He has built stone sea walls and a large elevated modern clubhouse here. Information about his yard can be found at www.pinoyboatservices.com. He can be emailed on zerox4125@yahoo.com.ph. Zeke's work phone number is 32 200 4125.



Pepe's yard is a smaller, more "local" concern, at the end of the same inlet (you have to pass through Zeke's yard to get to Pepe's). The water in the inlet tends to get a little dirty at low tide as it is a dead end, but is flushed out at high tide. Information about his yard can be found at www.asian-belgian-resort.com/pepy.html, his email address is pepe2hermosilla@gmail.com, and his cell phone number is 0916 924 9068.

Boatshop Philippines Inc. is owned by Mike Allen, who leases his yard to other boat builders who are building aluminum catamarans. His yard is in the north-west side of Pt Carmen bay. His phone number is (+63) 324299429 or 324258754 and his email address is boatshop@boatshop.com.ph

We used Pepe's yard for some extensive timberwork, fibre-glassing and painting, as well as some minor stainless steel, upholstery and aluminum work. All of the supplies and services we needed could be accessed in nearby Danao or Cebu City. We found Pepe very easy to work with and his staff always competent and helpful. Pepe's rates were very reasonable and he is very organised about his accounts, giving itemized weekly bills. The yard is fairly primitive, with small fixed bamboo docks, rickety gangways and ladders, limited workspace under cover, limited non-potable water, no showers/toilets, resident yard dogs (who become very friendly if you feed them!) and, at times unreliable, electricity. There is no communal lounging area for customers but Zeke's bar/restaurant, a very short walk away, welcomes paying customers. We were there in May/June/July/August and found it quite hot and humid until the SW monsoon established itself around June. During the SW monsoon period we didn't get a lot of rain – this

side of Cebu seems to be in a rain shadow and relatively dry. We were also there for a month or so in November/December, and the weather was fine, except for a passing typhoon.



In May 2012 Pepe's charges were:

Yard fees (incl. electricity) 5,000 pesos per month

Tradesmen's wages 550 pesos per day

Workmen's wages 450 pesos per day

Be prepared to do your own design work, planning, quantity surveying and purchasing. Pepe's staff will expect you to provide most of the electrical and other tools needed but will assist with purchasing local supplies, parts and equipment.

Consider bringing any needed chandlery and specialist boat parts/materials/supplies/equipment to be installed with you, as there is only the one chandlery in Cebu (Broadwater Marine, next to Cebu Yacht Club) and they don't maintain a lot of stock. They say they can get all catalogue items within 10 days. Marine Supplies Asia will also process orders for chandlery and other boating items promptly and send via a freight company such as DHL or FedEx. For technical or sales inquiries call Dave on +60 (0)1437 40053 or email: David.W@MarineSuppliesAsia.com

Most basic timber, paint and fiberglass supplies can be bought in Carmen and Danao but some items need to be sourced in Cebu – one of Pepe's staff will do this or go with you. You will need to pay them for their time. All boat items imported into the Philippines, either through an agency, chandlery or privately, attract up to 42% import duty.

Cebu is about 90 minutes away by bus. There are numerous buses running from Carmen to Cebu. Danao City is 15 minutes away by local bus or tricycle.

Note: While we had very little trouble with sandflies and mosquitos in Carmen we did hear that cases of malaria and dengue fever have been reported here. It would be wise to take precautions against these potentially dangerous insects.

WEATHER

The weather in this part of the Philippines is usually predictable and fairly benign. The NE monsoon starts around October/November and continues through to March/April, when you usually get a calm transition period of 6-8 weeks. The SW monsoon kicks in about June. As always, you will find local variations, and we felt that this part of Cebu was in quite a rain shadow. We received very little rain during the SW monsoon, yet other parts of the Visayas were quite rainy at this time.

The low rainfall was helpful with getting boat work completed, but it also meant we did not catch much water from rainfall. The water in the boatyards is too dirty to use a desalinator, so you may have to purchase drinking water. Hint: Try to fill your water tanks before you arrive.

The “official” typhoon season is said to be from June to November, but there have been recorded typhoons in every month of the year in the Philippines. Typhoons tend to breed to the east near Palau and sweep north-west, through the Philippines and often on to Hong Kong, Taiwan and Japan. The areas usually most affected by typhoons are the easterly islands of Samar, Surigao, Luzon and north of Manila. Later in the season, typhoons tend to develop and stay further south. Locals will tell you that it is rare for typhoons to affect areas south of latitude 10*, or level with Puerto Princessa, the southern end of Negros and southern Mindanao. However, in both 2011 and 2012, typhoons swept through Mindanao and southern Negros in December.

We were in Pepe’s yard again in December 2012 when a late typhoon, Bopha, arrived. It swung south of Cebu after crossing Mindanao and tracked between Dumagette and Bonbonon as a category 3 typhoon. The Pt Carmen boat yards are situated in a small inlet off the southern arm of Carmen Bay, and protected from the coast by several low mangrove islands. The inlet is surrounded by large shallow ponds or bays and high levee roads between them. The inlet has no creek or drain running into it.



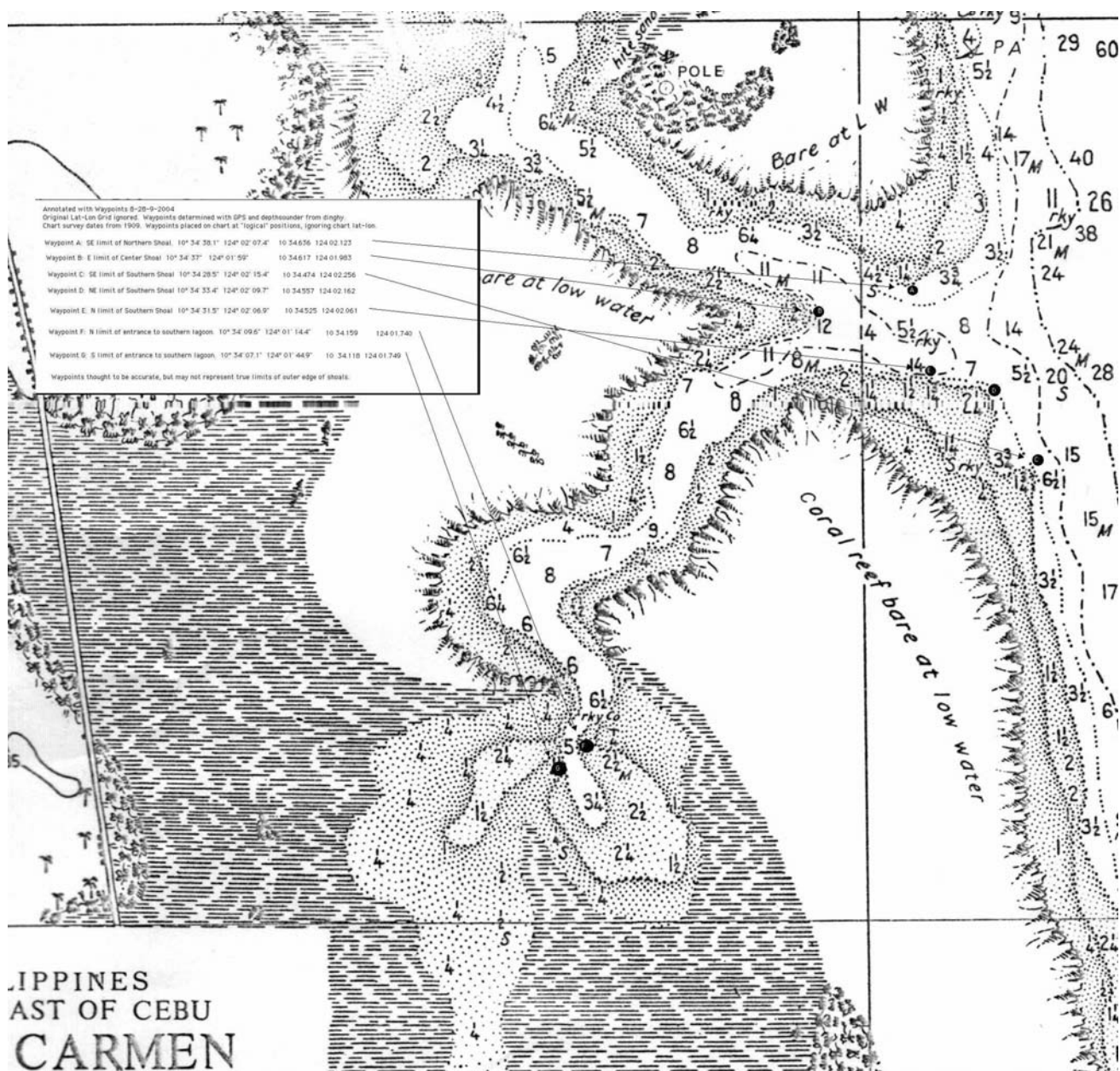
All the boats in Pepe’s and Zeke’s yards were well tied up, with warps from boats to both sides of the inlet. While boats in Carmen Bay reported winds of 25-30 knots, we were very protected in the inlet – we did not feel much effect at all.

Note: Check the local Philippine weather forecast website: www.pagasa.dost.gov.ph for weather updates and typhoon warnings. Other useful sites are Typhoon 2000 and Predictwind.

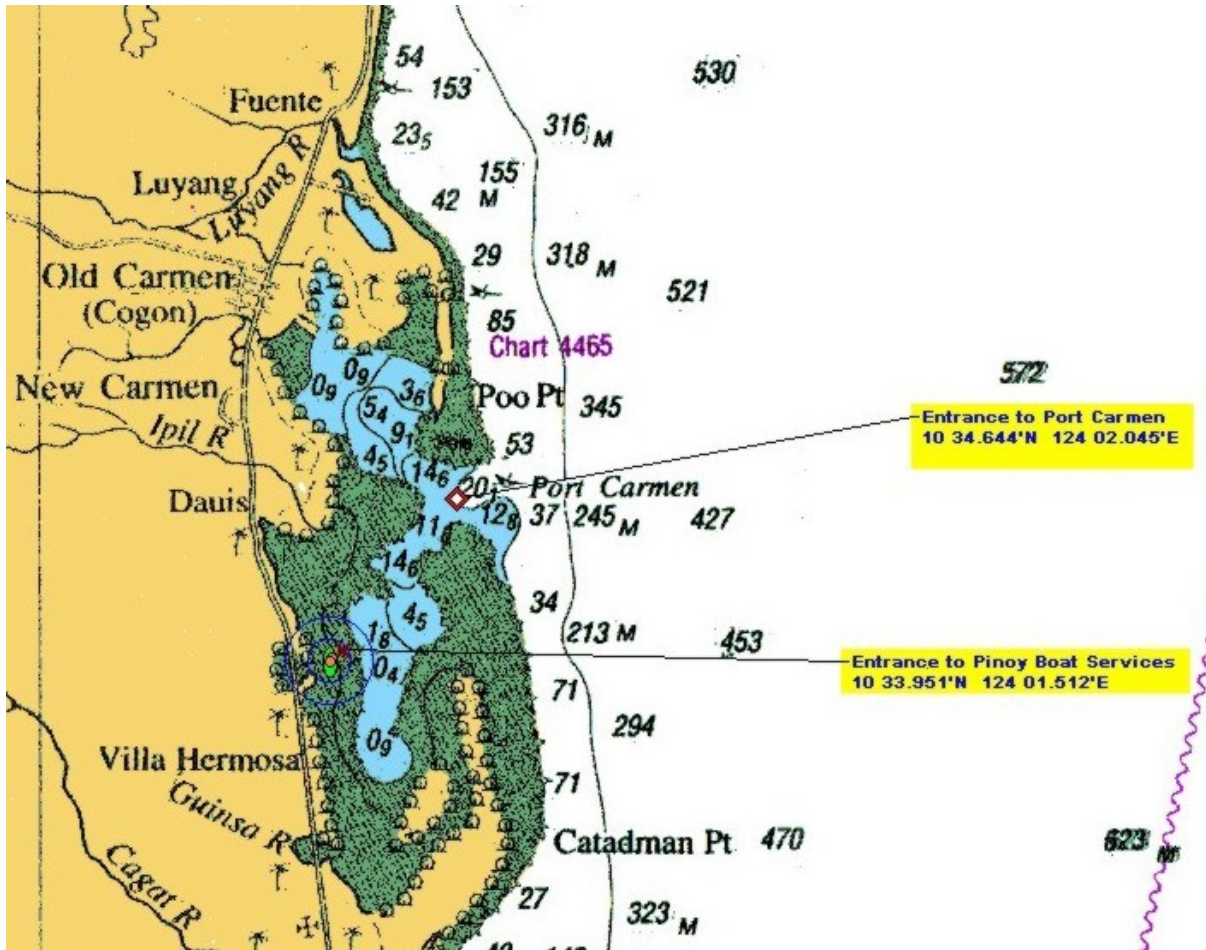
APPROACH TO PT CARMEN

Entry to Port Carmen can be difficult because of the discoloured water and fringing reefs. The following maps will give a clearer picture of the entrance. We found our GPS plotter was accurate here but C-Map was not. If intending to utilise the boat repair facilities here, it is best to anchor in the bay and dinghy down to the yards to enquire/negotiate/plan. The depths in this southern arm vary greatly, starting around 23 M at its entrance, but we found there was always at least 4M of water through it.

Below are survey maps and a photograph of the entrance to the bay and the southern arm of the bay, reproduced from the website of Terry Sargent on SV Valhalla.



Below is a photograph of the entrance to Pt Carmen, looking NW. The bay's anchorage is to the right of the barge wharf, about mid-picture, and the southern arm leading to the boat yards is on the left, before the gas storage and large green-roofed building in foreground. Note the reef extending out from this point.



HAUL OUT FACILITIES/SERVICES:

There are no rail or travel lift haul out facilities in Pt Carmen, but Zeke's yard does have a large concrete ramp used for careening yachts against the wall, and for catamarans to sit out for extended periods. This could be used for antifouling and hull work if the tides are appropriate. Zeke also has a small wheeled cradle to haul boats up the careening grid to hard stand. This cradle is adjustable and will accommodate boats up to approx. 45/50 ft.



Pepe is able to careen a small yacht in front of his workshop and has also created an unsealed wider careening grid for catamarans or larger boats with a shallow draft – also obviously tide-dependent. We draw 1.3 M and successfully used Pepe's careening grid for a 3-day bottom scrape and re-antifoul, using the highest tides of that month. He has built a timber bulwark on one side to tie to and to access the boat via a gangplank.



There is said to be a small haul out facility at Porters Boat Yard in Cebu, across the waterway from the Yacht Club. Their office phone number is 032 232 2185 but they are very difficult to contact. We phoned and called in to the facility but were unable to find out any details of their services.

ATTRACTIONS AROUND CARMEN:

- **Mt Uragay**
Springs Resort, McKinly Rd, Carmen (last road on left when heading north when leaving Carmen). This is a fresh water spring-fed swimming pool and picnic area, approx. 8 kms up the road from highway. The water is refreshingly cold. Cost – adults 50 pesos + parking fee.
- **Many of**
the resorts around Danao and Compostela will allow people to use their pools as day visitors, for approx. 50 to 100 pesos per person. Ask at Reception of the resort. The Sunshine Shin Beach Resort, on the Carmen side of Danao, has a lovely pool and bar/restaurant on the beachfront.
- **There are many “beach clubs”** along the coast from Compostela to Sogod where you can access a beach, not always sandy, to swim. You pay extra to use the small huts, but great for a picnic. Advice – don’t visit at low tides.
- **For those interested in blood sports** there are several cock-fighting venues in the area. Compostela has a major cock-pit situated on the National Highway that stages several sessions per week.
- **SM Consolacion Mall** has a small cinema complex. Adult admission approx. 160 pesos, and the current program is on-line, under SM City Cinemas. There are also cinemas in Cebu – at SM City Mall and Ayala Mall.
- **Q Park** is a beautiful large park with many religious settings – like a Catholic theme park, with a huge shrine/statue of Mary, grottos, etc. During Holy Week (Easter) it is very busy and some religious folk will actually crucify themselves on a cross (but not with nails) to show their faith. Q Park is approx. 4 kms along either of two access roads from National Highway at Compostela. Entry is free.
- **There are many fiestas** held during the year. Ask the locals if there is one scheduled nearby. The main activities at a fiesta involve eating, drinking, dancing, visiting other people’s houses, listening to loud bop-bop music and participating in karaoke, but they provide great local colour.



There are several good restaurants that serve a mix of local and western food. We would recommend:

- **Borrussia**, a German garden restaurant just south of Sogod.

- Mojo's Music Bar/restaurant, on the highway approx. 2km north of Danao, behind the Shell petrol station.
- Water Dragon, a "native" restaurant on the highway between Carmen and Catmon.
- Picnic, a garden restaurant in Luyang, just north of Carmen.
- The local restaurants on the north side of Carmen Plaza, between the highway and the bay, especially Vivienne's.

SIDE TRIPS FROM CARMEN:

If you have down time while boat work is under way, there are several options for short excursions from this area.

- Take a local bus north from Carmen, along the coast, to Sogod, then inland to Bogo and up to Hagnaya and Maya at the tip of Cebu. The drive is very scenic and you can plan stops for meals or to walk around. Local buses run all the time along this route and don't seem to be too crowded. Take a Ceres Liner (the smaller yellow buses) for very little extra cost and enjoy air-conditioning.
- From Maya you can get a local ferry across to Malapascua Island. This small island just off the northern tip of Cebu has a local fishing community but also caters for tourists and divers at the southern end of the island, where there are many small guesthouses and hotels available at reasonable cost and lots of good restaurants. There are many white sandy beaches on the island and excellent coral reefs for snorkeling and diving.
- Just north of Bogo is the small town of Hagnaya where you can catch a local ferry over to Santa Fe on the island of Bantayan Island, just to the west of the tip of Cebu. This island is not visited much by tourists but there are small guesthouses and restaurants available.
- The Camotes Islands are to the east of Cebu, and can be reached in 2 hours by larger ferries from Danao. These islands are quite small and unpopulated, beautifully clean and green. The water around them is usually clear and warm with some lovely white sand beaches. There are a few tourist hotels and resorts there and you can hire motorbikes to travel around.



- On the west coast of Cebu there is a cluster of diving and tourist facilities around Moalboal. This area is easily reached by local bus from the southern bus terminal in Cebu City.
- Whale sharks have been reported to be “in residence” in the small town of Oslob on the south-eastern coast of Cebu from March to May. Some Moalboal dive companies offer diving/snorkeling packages with these creatures when they are around. Go via Moalboal or direct to Oslob by local bus from Cebu City’s southern bus terminal.
- Cebu City offers some historical landmarks and places of interest, like San Pedro Fort, Magellan’s cross, Museum Sugbo, the Cathedral, several large monuments, as well as shopping malls, cinemas, restaurants and most of the boat services a yachtee would need. Hotels are of varying standards and are generally very reasonable. Check accommodation options with a booking agency like www.agoda.com
- Domestic and international airfares within and out of the Philippines are very reasonable nowadays, and Cebu City has an international airport. Pt Carmen could provide a secure anchorage to leave the boat while you do some land travel.



SERVICES, SUPPLIERS IN/NEAR PT CARMEN

	LOCATION	SUPPLIER & ADDRESS	INFORMATION/COMMENTS
ACCOMMODATION	Carmen	Picnic Restaurant and Rumes, beachfront road, Luyang	Several small modern rooms upstairs over garden restaurant. Across road from beach. Private WC & shower. Approx. 1000 pesos per night incl. breakfast. No pets.
		Steffies Cottages, beachfront, Luyang – opposite Picnic Restaurant. Ph 0949 9603793 or email steffie4250@gmail.com	Several small units incl. bath/toilet, wifi, cable TV, pool, use of fridge & kitchen, right on the water + decorated rooms within a large house incl. same amenities, from 1250 pesos per night. Discount for long term, pets OK.
		Philippines Beach Club, beachfront, Luyang – next door to Steffies.	Budget long-term accommodation on the waterfront. Small free-standing units with own WC/shower & TV, some with air-con, from approx. 6,000 pesos per month.
	Danao City	Sunshine Shin Beach Resort, Taytay, Danao City, Ph. 032 200 4170	Small resort on Pt Carmen side of Danao, on quiet street, with pool, gardens & beach. Standard room with air-con, fridge, bathroom, balcony = 1450 pesos per night. Pets OK.
		Sea Gates Resort/Catadman Lodge Ph. 0919 695 0588.	Very small local resort on Cebu City side of Danao, quiet street, with beach access. Small room with bathroom, air-con = 1200 pesos per night. Pets OK.
		Elsalvador Resort, opposite Sabang Elementary School, Highway, Danao	Larger 3 star resort on Cebu side of Danao, opposite Sabang Elementary School. On the water, with pool, restaurant, bar, wifi, cable TV, etc. Book thru Agoda = AU\$40 per night.
		Coco Palms Resort, National Highway, just south of Danao.	Larger resort on Cebu Side of Danao, with large pool, beach, gardens, bar, restaurant. Room with bathroom, air-con, fridge = 2500 pesos/night. No pets.
		Intosan Hotel, 2kms west of Danao City.	Large hotel with strong cement walls (good for typhoon shelter?), restaurant, water park. Rooms approx. 1,100/1,500 pesos per night. All rooms with air-con, cable TV, bath/WC.
	Cebu City	Many hotels and resorts – check with booking service such as Agoda.	Recommend: Hotel Pier Cuatro Hotel (close to SM City Mall), Pacific Pensionne (close to Chung Wah Hospital) Ph. 32 253 5271.

AIR-CONDITIONING & REFRIGERATION	Danao	Ph. Samuel, on 09174036348	Will come to boatyards.			
	Consolacion	Gab Appliance Service Centre. Ph 032 5167191 or 423 8668.	2 doors north of SM mall. Services appliances, sells air-con gauges, gas, some parts, etc.			
ALCOHOL	Carmen	Some sari-sari shops.	San Miguel and Red Horse beer easily available at sari-sari shops, some rum & other spirits if you ask around. No wine.			
	Danao City	Gaisano Supermarket	Beer, some Australian and Chilean wines, some spirits available.			
	Consolacion	Wine & Spirit Shop in Fooda Supermarket, town centre.	Beer, reasonable selection of Australian, Californian and Chilean wines + local spirits			
		SM City Mall, Consolacion	Some wine, beer & spirits within supermarket.			
	Mandaue City	Metro/Pacific Mall Wine & Spirit Shop	Located opposite supermarket – has a good selection of wines & spirits at good prices.			
	Cebu City	Wine & Spirits shop, SM City Mall, J. Luna Ave extension (just outside basement supermarket entrance)	Good selection of wine, from 135 pesos per bottle, + many spirits & beers.			
ALUMINUM WORK	<table><tr><td></td><td></td><td></td></tr></table> Pt Carmen				Mike Allen’s boatyard, Pt Carmen Bay.	Alloy welding, hire of welder negotiable
BANKS	Danao City	Metro – on National Hwy opposite new hospital, near waterfront Allied – behind markets Landbank – diagonally opposite Gaisano Centre in Ralota St	These banks have ATMs which are linked with the main banking systems. They will allow withdrawals of 10,000 pesos max. but you can make more than one withdrawal a day.			
	Consolacion, Mandaue & Cebu	Branches of most banks.	All shopping centres and malls have ATMs and usually banks. Some have external ATMs but some have ATMs within the mall, so you may only access them when the mall is open (usually 9am to 9pm).			
BATTERIES	Mandaue City	Cebu Massive Auto Parts Inc, Apt D, Comfoods Bldg, Hi-way, Ibabao, Mandaue City (opp. Belmont HWare)	Tyres, batteries, Jeep, Toyota & Isuzu parts & accessories			
CHANDLERY	Cebu City	Broadwater Marine, Bldg 1 Cebu Yacht Club, Pusok, Lapu-Lapu City.	Limited range of chandlery items but they will ship in – delivery from 2-7 days. Taxi from Metro Mandaue = 80 pesos approx.			

		Ph. +63 922 811 0725 or 32 341 0474, Email: cebu@broadwatermarine.com	Rubylyn Estrada is very helpful accounts assistant.
CHARTS	Cebu City	Central mapping agency of Philippines has agency at Room 301, Osmena Bldg 11, Osmena Blvd, Cebu. Ph. 032 – 412 1749 or 505 9945.	http://www.namria.gov.ph/msos.aspx . They sell all “base map reproducibles”, incl. nautical charts. Available in raster or vector format.
	Lapu-Lapu City	Navicharts Philippines, Inc. Next to Broadwater Marine, opposite Cebu Yacht Club. Ph. 32 3401193/340 1194.	Very helpful people – have a great range of charts, books, flags in stock, and will order in if necessary. Web site: www.navicharts.org Email: navchart@mozcom.com
COMPUTERS	Danao	Danao Bus Terminal Building – 3 rd laneway along left side of building.	Computer hardware & software repairs. Seems competent and inexpensive.
COMPOSITE MATERIALS	Cebu City	Axson Technologies, 161K Echavez Cogon, Ramos, Cebu City. Call Urbano Herbania Jr on 0922 8826939 or 254 0006 or 412 5661.	They retail many hi-tech materials incl. “honeycomb” sheets. Will deliver to Carmen.
ELECTRONICS	Cebu City	Marick Corp, Cebu Ice Bldg, M.J. Cuenco, Cebu. Ph 032 232 8870/79.	Electronics & radar. Call Ryan Gabutan, tech/sales on 09277628622.
FOOD	Carmen	Public markets, centre of town	Fresh fruit & vegetables in season, fresh chicken & pork, eggs, bulk rice, basic household products. BBQ chicken & pork shop just north of markets. Several bakeries in town.
	Danao City	Public markets, Ralota St	More variety than in Carmen
		Alberto’s Pizza, Duterte St, Suba, Danao (opp. side of National Rd to main town area). Ph. 032 5125998.	Huge variety of 9” & 11” pizzas, will deliver to Drydock Carmen free. Prices 79 to 249 pesos.
		Gaisano Capitol - supermarket, ground floor Gaisano Centre, Ralota St, opposite bus station	Usual groceries, incl. juice, milk + pork butchery section + frozen foods (frankfurts, meat patties, bacon etc.). Good selection of breads. Beer & limited wine and spirits selection. No pet food.
	Sogod	Borussia Deli & Restaurant, Bawo, Sogod (on sea side of main road, just south of Sogod and north of Catmon – look for sign)	German cold meats, some deli items & breads for purchase, also functions as a coffee shop & restaurant in lovely garden setting.

	Consolacion	Fooda supermarket, on National highway in middle of town, on left going to Cebu City. On bus route to Cebu.	Very good western style supermarket – has cheeses, cream, butters, fresh meats incl. beef, fresh fruit & veg, wine, beer & spirits, pet supplies, household goods. Also some specialty shops, fast food, bakeries, banks in same small mall. Opens 9am.
		SM City, on highway, just north of Fooda, on opposite side of road.	New franchise of SM Cebu City, opened June 2012. Small upmarket mall with department store, supermarket (good variety of local & western foods/goods), cinemas, food court, wine/spirits, Ace hardware, specialty shops. Opens 10am Mon-Thurs, 9am Fri-Sun.
	Mandaue City	Metro-Pacific Mall, cnr UN Ave & MC Briones St, Mandaue.	Bus from Carmen will pass by this mall and stop if asked. Mall contains upmarket department store, supermarket (lots of western style food), food court, wine shop and fast food outlets. Opens 9am. Taxi from here to Carmen = 1000 pesos.
	Mandaue City	Makro Hypermarket, Logarta Ave.	Large supermarket with hardware store attached. Short walk from North Bus Station.
	Cebu City	SM City Mall, J. Luna Ave extension,	Huge mall with many specialty shops + food court + cinemas + bowling alley + very large supermarket on lower ground floor, which has many western foods – cheese, yoghurt, beef, butter, sausages, spices, biscuits, chocolate, pet food & supplies. Short cab ride from North Bus Station. Taxi to Carmen approx P1400.
		Ayala Mall	Another large upmarket mall with all amenities, western-style supermarket with great variety of cold meats, usual fast food outlets, etc. Cab from North bus station = approx. 80 pesos.
FREIGHT/CUSTOMS	Mandaue	Purcia Transport System Inc., Door 3, Ceniza Commercial Plaza, Highway, Mandaue. Ph. 0917 6201878.	Services incl. freight forwarding, Customs & tariff brokerage, import/export consultancy, packing & crating, cargo handling, personal removals. Ph. 32 346 3633.
FUEL	Carmen	Petron service station opposite markets approx. 4 kms from Drydock.	“Special” tricycle trip with fuel drums to service station and back.
	Danao	Shell service station on left side of road approx. 5 kms from Drydock	“Special” tricycle trip with fuel drums to service station and back.
GASES	Danao	Petronus Gas, corner of Rizal & Mabini Sts. Ph. 0917 3083150	Able to fill Australian & USA LPG bottles. Leave bottle there, takes several days. May pick up & deliver, call first then SMS text.

		Mandaue Compressed Gases Corp, National Highway.	Commercial gases – CO2, argon, nitrogen, etc. Situated on left side of road, just past left bend as you enter Danao from north.
	Mandaue	Linde Philippines (South) Inc., Bldg 1, Kentredder Square, A.C. Cortes Ave.	Commercial & industrial gases eg argon for welding. Ph 032 346 7475.
GENERATOR/AIR- CON.	Carmen	Tony, who works at Zeke's boat yard.	Tony is reputed to be very good at fixing generators and air-conditioners. You may have to approach him through Zeke.
GLASS & ALUMINUM	Danao	Diamond Glass & Aluminum, Ralota St, opposite public markets.	Variety of aluminum strips & extrusions, security screen and basic glass.
	Mandaue	Elicar Glass & Aluminum Supply, 647 North Rd, Basak, Mandaue City	Good variety of laminated and safety glass as well as ordinary glass & acrylics.
		Cebu C&O Glass & Aluminum, Mandaue. Ph. 520 1957 or 09239138267. Ask for Steve.	Tempered glass, 1/4" clear glass.
	Cebu	Kima Glass, Borromeo St, Manalli. Ph. 032 253 8432	Various glass products.
HARDWARE & ELECTRICAL	Carmen	Camp Construction, up side street opp. markets & Petron Fuel.	Basic hardware items.
	Danao City	Jet Hardware & Electrical Supplies, P. Del Pilar St, Poblacion	Sandpaper, paint, rollers, timber, other hardware items.
		Dondino Hardware, P.Del Pilar St.	Lumber, electrical & other hardware items
		Tokyo Hardware, P. Del Pilar St.	General hardware items
	Mandaue City	S.E.A Olympus Marketing Inc., A.C. Cortes Ave, Mandaue City.	Epoxy & fiberglass supplies incl. Cabosil silica, paint brushes, sandpaper, other general hardware items. Close to Belmont H/W.
		MC Construction Supply Corp, A. Cortes Ave, Mandaue City	Epoxies, thinners, etc. For enquiries Ph. 09236978192 & talk to Andrew. 10 mins walk from Metro/Pacific mall.
		Belmont Hardware Depot, MC Briones St, Mandaue. Ph 346 4268, website www.belmonttools.com	2 large stores with machine tools, welding equipment, plumbing, pumps, general hardware, 10 mins walk from Metro/Pacific Mall.
	Cebu City	Big Pix Graphic Systems Inc., 161-K gen. Echavez Ext. Cogan Ramos, Cebu City.	Resins, etc

			SS bolts, nyloc nuts, circlips, etc
		Cebu Boltcentre Corp., near COA Bldg, M.J. Cuenco Ave, San Roque, Cebu City North. Ph. 32 238 1474	
ICE	Carmen	Behind public markets in central Carmen	50 pesos per block
LAUNDRY	Boat yards	Several women known to workers will do washing – ask boat boys.	Negotiate price beforehand – usually a huge bag, around 8kg, washed, dried & folded = 250 to 300 pesos.
	Danao City	Several shop laundries there	Std price – 25 pesos per kilo for wash, dry & fold, but no delivery.
MACHINERY/METAL FABRICATION	Danao	Emot Machinery Shop. Ph. 032 2006167.	Will fabricate metal parts to suit. Specialises in replicating original parts. Location: Turn west off National Highway at school opp. Mandaue Compressed Air Services, then take dirt road on left (60-70 M off highway), follow this to machine shop at end of road.
		GM Orosio Machine Shop, Rizal St, Danao	Will fabricate basic metal items & SS pipes.
	Lapu-Lapu City	Eddie Boy Machine Shop, Quezon Nat. Highway, Pusok, Lapu-Lapu. Ph: 340-8697 & 0916 4885601.	Good all-round engineering/fabrication workshop.
MEDICAL SERVICES	Danao	Mother & Child Hospital, National Highway, Danao.	Basic outpatient services, some specialists.
		Danao Provincial Hospital, National Highway, Danao, opposite Metro Bank.	New facility opening late 2012. Outpatients and inpatients.
		Dr Poblacion, on Bonifacio St near Rizal St.	An Internal Medicine Dr but also manages GP practice.
		Dr Villamor, office on National Highway between Petron Fuel and Metrobank.	Orthopaedist. Clinic hours are Mon, Wed & Fri, 3-6 pm. Also has a practice in Mandaue and visits Bogo monthly. Ph. 0917 7274849.
		Mercury Drugs, on corner of Ralota and Pilar Sts	Well-stocked pharmacy with most drugs and medications, first aid and medical supplies.
	Consolacion	Perfect Smile Dental Clinica, 2 nd floor,	No appointment necessary. Professional, sterile practices,

		SM Mall.	competent and pleasant staff. Good prices.				
	Cebu	Chung Wah Hospital, Central Cebu.	Large general hospital with good outpatients department.				
		Pardis Chiropractic Clinic, Lower Basement level, Ayala Shopping Mall.	American trained chiropractor, open 10 – 12am, & 2-7pm, Mon to Sat. (no appt needed).				
		Point of Care Acupuncture Clinic. Dr Jefferson Ong. Unit 504 Winland Tower No.1, Juana Osmena Ext, Cebu City. Ph. 032 5833147, 0908 8625387.	Very good clinician, clean, professional. Practice close to Ayala Mall, Chung Wha Hospital. Only available Thursday & Friday. 800 pesos 1 st visit, 500 pesos subsequent visits.				
NUTS, BOLTS, SCREWS	Consolation	Bobsteel Bolt Centre, Nat. Highway, Consolacion. Ph. 032 423 4145	Good variety of SS and other nuts bolts, screws, circlips, etc. 1km north of SM Mall, on opposite side of road.				
	Cebu City	Cebu Boltcentre Corp., near COA Bldg, M.J. Cuenco Ave, San Roque, Cebu City North. Ph. 32 238 1474	SS bolts, nyloc nuts, etc.				
		Specialized Bolts, V. Sotto St, Dakbayan sa Sugbo, Ph. 032 255 7681	Near Pier 3. Good variety of nuts & bolts.				
OUTBOARDS	Cebu City	LG Line Industrial Inc., J.L. Briones St, NRA, Cebu. Ph. Ariel Alcantara on 0917 7906732 or 0922 8706732	Yanmar outboards + Valvoline & Suzuki dealership.				
		Marick Corporation, A.U. Cebu ice Bldg, 833 M.J. Cuenco Ave, Cebu City. Ph. 32 232 8870	Evinrude & Johnson outboards, as well as Furuno & Volvo Penta products.				
PAINT & ANTI-FOULING	<table><tr><td></td><td></td></tr><tr><td colspan="2">Liloan</td></tr></table>			Liloan		Goldenkote Enterprises, National Rd, Yati, Liloan	All types of 1 & 2 pack paints, epoxies, thinners, etc.
Liloan							
		Maincoat Inc, Marine & Industrial Coatings, Cebu – contact Paul Sencio on Ph. 0917 542 6685.	All types of industrial paints and anti-fouls, with great after-sales service. Email: achernar_tgp@yahoo.com				
	Mandaue City	Jotun paints. Door 2, Evangeline Bldg, R.T. Colina St, estancia Ibabao, Mandaue City. Ph 0922 828 2277.	Jotun brand paints, thinners, primers, etc.				
PHOTOCOPYING etc	Danao	Ralota St, between Gaisano Centre and Mercury Drugs.	Several small shops provide limited copying, laminating, bookbinding, enlarging services. “Agape” shop is very helpful. Law				

			office nearby offers copying services also.
		Phone Office, top floor, Fairbank Bldg, cnr Rizal & Beatriz D Durano St Danao	Offers a fax service.
	Cebu City	Chart & plan copying, Microcadd. At Cyberzone, 3 rd level, SM City Mall, NRA, Cebu.	Charts 40 – 80 pesos each to copy.
PROPELLORS	Liloan City	Unicast, Yati, near markets, Liloan.	Repairs and sales of new props.
	Mandaue City	Dynacast, 473 Gerado Ouano St, Mandaue City. Ph. 32 346 0300/346 8805/345 6171.	Manufacture, repairs and sales of props. Email: inquiry@dynacast.ph
	Cebu City	Marine & Industrial Hardware Inc., EO Perez St, Cebu.	Sells props, heat exchangers, etc.
RESTAURANTS	Boat yard	Zeke's bar/restaurant	No menu, but request pork, chicken, sausage, fish, prawn dishes. .
	Carmen	Picnic Restaurant, Bantigue, Luyang, opposite Steffies and Philippines Beach Club. Ph.0927 5463596.	Modern clean garden restaurant – does local & some western dishes at good prices.
	Catmon	Water Dragon Native Restaurant, seaside of National Hwy between Carmen & Catmon	Local dishes. Pata (BBQ pork) esp. good.
	Sogod	Borussia, on seaside of National Hwy, between Catmon and Sogod	Café/restaurant in lovely garden setting. Good variety of food incl. German. Also sells ham, frankfurts, bread, cakes, etc.
SAILS	Cebu City	Hydes Sails, Light Industrial Area, Pusok, Lapu Lapu, Cebu City. Phone Francis on 3414611 or 09176209342	Apparently provides good quality work on sails, covers & awnings. Will come to Carmen some Wednesdays to measure, fit sails and awnings. Email franciscomantuajr@hydesails.com.ph
STAINLESS STEEL	Carmen	Pepe's and Zeke's boat yards	Workmen available who are skilled in SS fabrication. Alloy welder available for hire from Mike Allen's boat yard – 300 pesos per day.
	Cebu City	Hardwarecentre Cebu, Inc., J. Varya St, Nth Reclamation Area, Mabolo	SS pipes, couplings, plugs, fittings, etc. Same company has another store across road with SS screws & bolts, tools, drill bits, etc.
STICK-ON SIGNS, LETTERING	Cebu City	Signa Moderna, 888 PMM Building, M.J. Cuenco Ave, Mabolo, Cebu City.	Offset printing, stickers, laser engraving & cutting, large format printing – boat signs.

		Ph: 0906 830 4431/0923 843 3886	www.signamoderna.com
TIMBER	Carmen	Carmen Construction Supply, National Highway, Carmen.	Most timber requirements – will deliver.
	Mandaue City	DJ & Sons Products & Services, DJ Bldg, Highway Maguikay, Mandaue. Ph. 32 346 2176/346 9505.	Wood veneers, parquetry, hardwoods, as well as air tools & spray painting equipment.
	Cebu	Central Philippines Marketing Corp, 291 Colon St, Cebu. Ph. 256 0920 or 255 2028.	Good quality interior timber eg narra (teak virtually impossible to get here nowadays).
UPHOLSTERY/AWNINGS	Carmen	Mistula Upholstery, National Highway, Carmen (0.5km north of markets). Ph. 0905 3378660	Local tradesman experienced in awnings and general upholstery. Does a good job but unable to supply more than vinyl material. Happy to use other if you supply.
	Mandaue City	Mandaue Canvas, Apt D, Comfoods Bldg, Hi-way, Ibabao, Mandaue City.	Will manufacture or repair but will not sell awning supplies or material. Situated opp. Belmont H/Ware. Ph. 032 346 7414.
	Cebu	Hydes Sails, Cebu Light Industrial Park, Basak, Lapu Lapu City. Ph Martin or Francis on 341 4611	Will fabricate awnings, canvas covers, etc. Occasionally travel to Carmen for work.
		Broadwater Marine, Cebu Yacht Club grounds, Lapu Lapu, Cebu.	Have a limited range of Sunbrella fabric, but can order in other colours, etc.
WATER	Carmen	Karesh Purified Drinking Water, Bogo. Ph. 032 434 8601 or 0917 9600050	Will deliver drinking water to boat yard – 25 pesos per 20 litre bottle, no bottle deposit but you must return bottles.
		Aqua Mega, National Highway, Carmen (2-3 kms on left going north from Drydock Rd).	Need to buy bottles – 170 pesos per bottle, 20 pesos to fill.
		Pidi, local water-carter – ask boat yard boys to contact him.	Will deliver non-potable water for washing, etc, for 5 pesos per 20 litres.